

JANUARY 15, 2013

**WOODLAND COMMONS**

468 HALF DAY RD  
 BUFFALO GROVE, IL 60089  
 SQUARE FOOTAGE: 871

**EXISTING CONSTRUCTION**

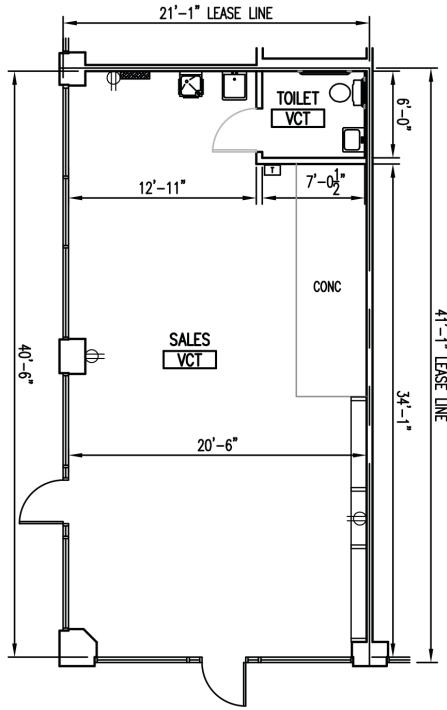
FRONT: ALUM. STOREFRONT ASSEMBLY (1/4" GLASS)  
 SIDES: 1 HR. GYP. BD. DEMISING WALL  
 REAR: 1 HR. GYP. BD. DEMISING WALL

SALES/PRER:  
 OUTLETS & TELE/DATA (MISC. LOCATIONS)  
 2x4 RECESSED FLUORESCENT FIXTURES  
 2x4 CEILING TILE & GRID  
 FINISHES:  
 SLAT WALL/PAINT, VINYL BASE

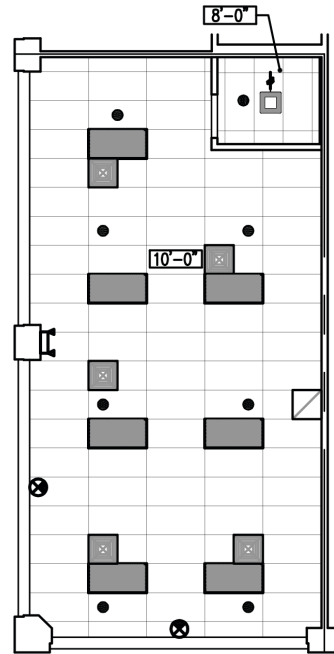
TOILET (ADA):  
 2x4 CEILING TILE & GRID  
 LAVATORY  
 WATER CLOSET  
 COMBO LIGHT/EXHAUST FAN  
 FINISHES:  
 PAINT & VINYL BASE

ELECTRICAL  
 100A 120/240V, 1Ø  
 4W 30 BRKR PANEL

WATER SERVICE 3/4"Ø



**FLOOR PLAN**  
 SCALE: 3/32" = 1'-0"



**CEILING PLAN**  
 SCALE: 3/32" = 1'-0"

**LEGEND**

	FLUORESCENT LIGHT FIXTURE		OUTLETS
	FLUORESCENT STRIP FIXTURE		FIRE EXTINGUISHER
	BATTERY PACK EMERGENCY FIXTURE		F.A. DEVICES
	EXIT SIGN		SPRINKLER HEAD
	TOILET EXHAUST FAN		THERMOSTAT
	DIFFUSER / REGISTER		POWER PANEL



LEASE LINE PER BOMA Z65.5-2010

**LEASING INQUIRIES**  
 PHONE: 877.206.5656  
 EMAIL: LEASING@IRCRETAILCENTERS.COM  
 IRCRETAILCENTERS.COM