



Demographic and Income Comparison Profile

Stone Creek Towne Center
Location
Rings: 1, 3, 5 mile radii

Prepared by Esri
Latitude: 39.25218
Longitude: -84.60084

	1 mile	3 miles	5 miles
Census 2010 Summary			
Population	8,789	53,404	148,827
Households	3,571	20,579	59,217
Families	2,364	14,361	39,748
Average Household Size	2.44	2.57	2.49
Owner Occupied Housing Units	2,716	15,324	41,909
Renter Occupied Housing Units	855	5,255	17,308
Median Age	39.6	38.1	38.7
2016 Summary			
Population	8,821	53,168	149,517
Households	3,607	20,631	59,906
Families	2,352	14,225	39,669
Average Household Size	2.42	2.56	2.47
Owner Occupied Housing Units	2,644	14,747	40,484
Renter Occupied Housing Units	963	5,884	19,423
Median Age	40.9	39.0	39.6
Median Household Income	\$52,082	\$51,963	\$52,149
Average Household Income	\$65,669	\$64,858	\$66,958
2021 Summary			
Population	8,903	53,398	151,004
Households	3,653	20,798	60,726
Families	2,364	14,255	39,942
Average Household Size	2.41	2.55	2.46
Owner Occupied Housing Units	2,677	14,846	40,939
Renter Occupied Housing Units	975	5,952	19,787
Median Age	41.4	39.4	39.9
Median Household Income	\$56,028	\$56,914	\$57,913
Average Household Income	\$71,523	\$70,868	\$73,624
Trends: 2016-2021 Annual Rate			
Population	0.19%	0.09%	0.20%
Households	0.25%	0.16%	0.27%
Families	0.10%	0.04%	0.14%
Owner Households	0.25%	0.13%	0.22%
Median Household Income	1.47%	1.84%	2.12%

Source: U.S. Census Bureau, Census 2010 Summary File 1. Esri forecasts for 2016 and 2021.



Demographic and Income Comparison Profile

Stone Creek Towne Center
 Location
 Rings: 1, 3, 5 mile radii

Prepared by Esri
 Latitude: 39.25218
 Longitude: -84.60084

2016 Households by Income	1 mile		3 miles		5 miles	
	Number	Percent	Number	Percent	Number	Percent
<\$15,000	288	8.0%	1,927	9.3%	6,548	10.9%
\$15,000 - \$24,999	356	9.9%	2,024	9.8%	6,316	10.5%
\$25,000 - \$34,999	449	12.4%	2,450	11.9%	6,616	11.0%
\$35,000 - \$49,999	598	16.6%	3,362	16.3%	8,955	14.9%
\$50,000 - \$74,999	866	24.0%	4,597	22.3%	11,921	19.9%
\$75,000 - \$99,999	447	12.4%	2,803	13.6%	7,993	13.3%
\$100,000 - \$149,999	382	10.6%	2,269	11.0%	7,373	12.3%
\$150,000 - \$199,999	131	3.6%	741	3.6%	2,513	4.2%
\$200,000+	90	2.5%	459	2.2%	1,670	2.8%
Median Household Income	\$52,082		\$51,963		\$52,149	
Average Household Income	\$65,669		\$64,858		\$66,958	
Per Capita Income	\$26,622		\$25,420		\$27,034	

2021 Households by Income	1 mile		3 miles		5 miles	
	Number	Percent	Number	Percent	Number	Percent
<\$15,000	299	8.2%	1,940	9.3%	6,532	10.8%
\$15,000 - \$24,999	349	9.6%	2,019	9.7%	6,151	10.1%
\$25,000 - \$34,999	454	12.4%	2,544	12.2%	7,008	11.5%
\$35,000 - \$49,999	449	12.3%	2,081	10.0%	5,407	8.9%
\$50,000 - \$74,999	825	22.6%	4,834	23.2%	12,711	20.9%
\$75,000 - \$99,999	554	15.2%	3,242	15.6%	9,078	14.9%
\$100,000 - \$149,999	461	12.6%	2,721	13.1%	8,801	14.5%
\$150,000 - \$199,999	159	4.4%	905	4.4%	3,128	5.2%
\$200,000+	101	2.8%	513	2.5%	1,909	3.1%
Median Household Income	\$56,028		\$56,914		\$57,913	
Average Household Income	\$71,523		\$70,868		\$73,624	
Per Capita Income	\$29,104		\$27,865		\$29,815	

Data Note: Income is expressed in current dollars.

Source: U.S. Census Bureau, Census 2010 Summary File 1. Esri forecasts for 2016 and 2021.



Demographic and Income Comparison Profile

Stone Creek Towne Center
 Location
 Rings: 1, 3, 5 mile radii

Prepared by Esri
 Latitude: 39.25218
 Longitude: -84.60084

2010 Population by Age	1 mile		3 miles		5 miles	
	Number	Percent	Number	Percent	Number	Percent
Age 0 - 4	527	6.0%	3,546	6.6%	9,806	6.6%
Age 5 - 9	537	6.1%	3,669	6.9%	9,964	6.7%
Age 10 - 14	608	6.9%	3,826	7.2%	10,363	7.0%
Age 15 - 19	644	7.3%	4,026	7.5%	10,838	7.3%
Age 20 - 24	548	6.2%	3,160	5.9%	8,753	5.9%
Age 25 - 34	1,073	12.2%	6,548	12.3%	18,160	12.2%
Age 35 - 44	1,057	12.0%	6,613	12.4%	18,596	12.5%
Age 45 - 54	1,281	14.6%	8,039	15.1%	23,163	15.6%
Age 55 - 64	1,060	12.1%	6,430	12.0%	18,424	12.4%
Age 65 - 74	737	8.4%	3,880	7.3%	10,670	7.2%
Age 75 - 84	495	5.6%	2,692	5.0%	7,285	4.9%
Age 85+	222	2.5%	973	1.8%	2,804	1.9%

2016 Population by Age	1 mile		3 miles		5 miles	
	Number	Percent	Number	Percent	Number	Percent
Age 0 - 4	511	5.8%	3,347	6.3%	9,254	6.2%
Age 5 - 9	473	5.4%	3,324	6.3%	9,461	6.3%
Age 10 - 14	547	6.2%	3,566	6.7%	9,764	6.5%
Age 15 - 19	570	6.5%	3,508	6.6%	9,468	6.3%
Age 20 - 24	629	7.1%	3,521	6.6%	9,566	6.4%
Age 25 - 34	1,102	12.5%	6,819	12.8%	19,191	12.8%
Age 35 - 44	1,014	11.5%	6,246	11.7%	17,664	11.8%
Age 45 - 54	1,182	13.4%	7,172	13.5%	20,387	13.6%
Age 55 - 64	1,158	13.1%	7,088	13.3%	20,739	13.9%
Age 65 - 74	878	10.0%	4,777	9.0%	13,452	9.0%
Age 75 - 84	519	5.9%	2,646	5.0%	7,349	4.9%
Age 85+	238	2.7%	1,153	2.2%	3,223	2.2%

2021 Population by Age	1 mile		3 miles		5 miles	
	Number	Percent	Number	Percent	Number	Percent
Age 0 - 4	520	5.8%	3,325	6.2%	9,202	6.1%
Age 5 - 9	477	5.4%	3,259	6.1%	9,197	6.1%
Age 10 - 14	510	5.7%	3,393	6.4%	9,691	6.4%
Age 15 - 19	511	5.7%	3,348	6.3%	9,144	6.1%
Age 20 - 24	560	6.3%	3,138	5.9%	8,507	5.6%
Age 25 - 34	1,244	14.0%	7,363	13.8%	20,444	13.5%
Age 35 - 44	990	11.1%	6,392	12.0%	18,362	12.2%
Age 45 - 54	1,073	12.1%	6,363	11.9%	18,079	12.0%
Age 55 - 64	1,222	13.7%	7,212	13.5%	20,919	13.9%
Age 65 - 74	975	11.0%	5,594	10.5%	16,132	10.7%
Age 75 - 84	570	6.4%	2,826	5.3%	8,006	5.3%
Age 85+	250	2.8%	1,187	2.2%	3,318	2.2%

Source: U.S. Census Bureau, Census 2010 Summary File 1. Esri forecasts for 2016 and 2021.



Demographic and Income Comparison Profile

Stone Creek Towne Center
 Location
 Rings: 1, 3, 5 mile radii

Prepared by Esri
 Latitude: 39.25218
 Longitude: -84.60084

2010 Race and Ethnicity	1 mile		3 miles		5 miles	
	Number	Percent	Number	Percent	Number	Percent
White Alone	6,967	79.3%	38,636	72.3%	99,115	66.6%
Black Alone	1,391	15.8%	12,239	22.9%	42,743	28.7%
American Indian Alone	18	0.2%	136	0.3%	286	0.2%
Asian Alone	121	1.4%	547	1.0%	1,663	1.1%
Pacific Islander Alone	9	0.1%	48	0.1%	103	0.1%
Some Other Race Alone	70	0.8%	475	0.9%	1,308	0.9%
Two or More Races	213	2.4%	1,323	2.5%	3,609	2.4%
Hispanic Origin (Any Race)	151	1.7%	1,168	2.2%	2,958	2.0%

2016 Race and Ethnicity	1 mile		3 miles		5 miles	
	Number	Percent	Number	Percent	Number	Percent
White Alone	6,848	77.6%	37,667	70.8%	97,485	65.2%
Black Alone	1,456	16.5%	12,533	23.6%	43,820	29.3%
American Indian Alone	18	0.2%	120	0.2%	251	0.2%
Asian Alone	147	1.7%	664	1.2%	2,027	1.4%
Pacific Islander Alone	9	0.1%	50	0.1%	108	0.1%
Some Other Race Alone	84	1.0%	555	1.0%	1,532	1.0%
Two or More Races	258	2.9%	1,579	3.0%	4,295	2.9%
Hispanic Origin (Any Race)	188	2.1%	1,417	2.7%	3,626	2.4%

2021 Race and Ethnicity	1 mile		3 miles		5 miles	
	Number	Percent	Number	Percent	Number	Percent
White Alone	6,761	75.9%	36,972	69.2%	96,157	63.7%
Black Alone	1,529	17.2%	12,943	24.2%	45,209	29.9%
American Indian Alone	20	0.2%	123	0.2%	253	0.2%
Asian Alone	172	1.9%	776	1.5%	2,372	1.6%
Pacific Islander Alone	12	0.1%	56	0.1%	120	0.1%
Some Other Race Alone	102	1.1%	672	1.3%	1,848	1.2%
Two or More Races	307	3.4%	1,856	3.5%	5,045	3.3%
Hispanic Origin (Any Race)	233	2.6%	1,746	3.3%	4,480	3.0%

Source: U.S. Census Bureau, Census 2010 Summary File 1. Esri forecasts for 2016 and 2021.



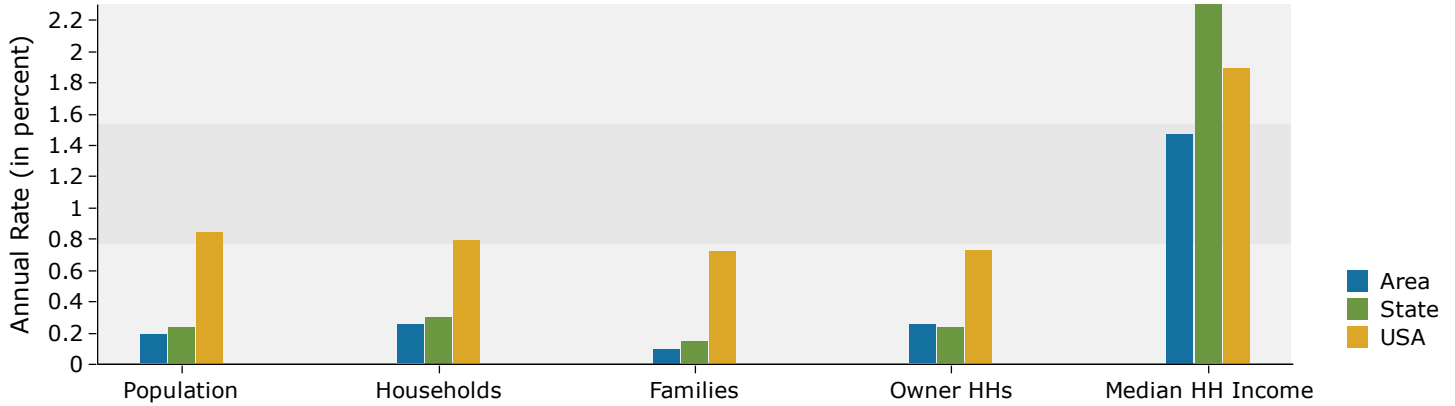
Demographic and Income Comparison Profile

Stone Creek Towne Center
 Location
 Rings: 1, 3, 5 mile radii

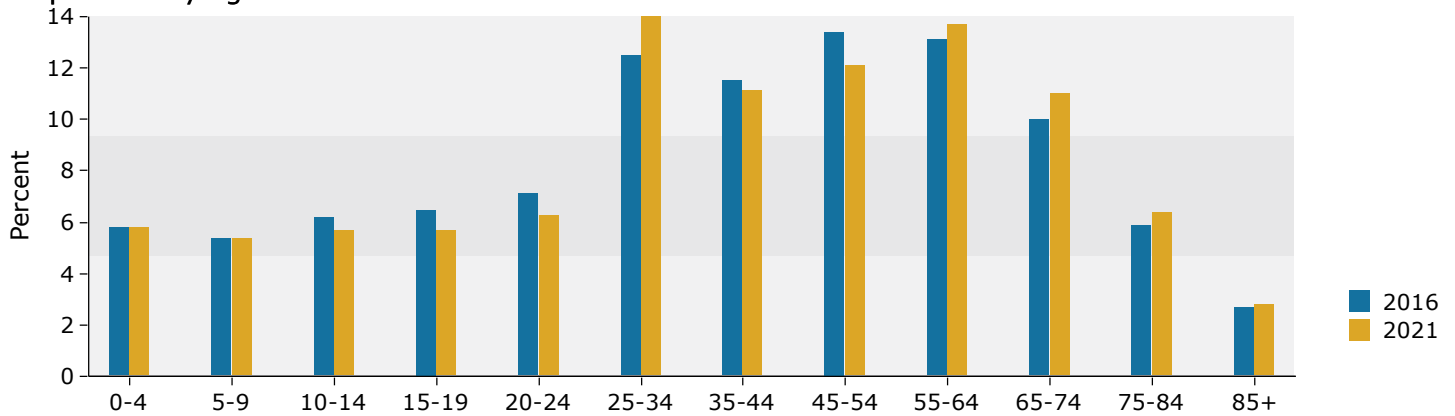
Prepared by Esri
 Latitude: 39.25218
 Longitude: -84.60084

1 mile

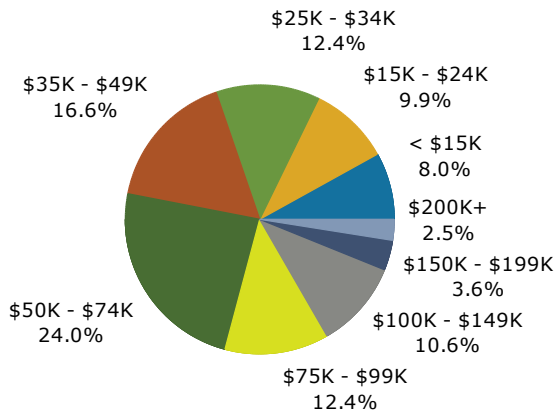
Trends 2016-2021



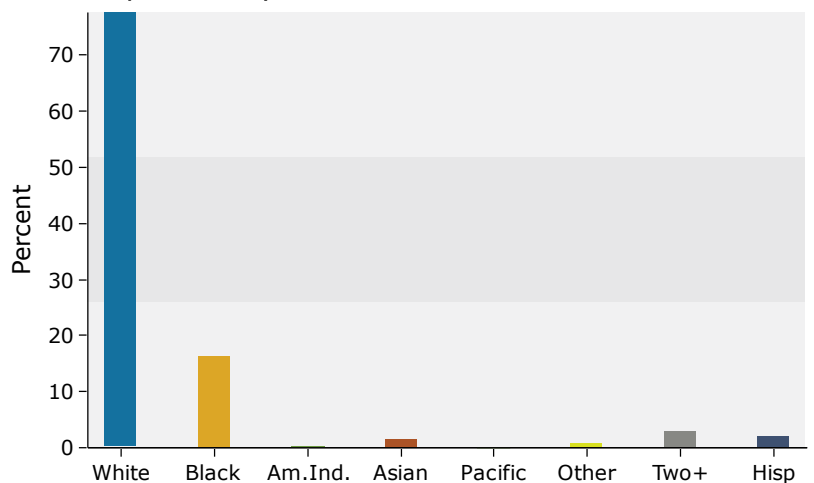
Population by Age



2016 Household Income



2016 Population by Race



Source: U.S. Census Bureau, Census 2010 Summary File 1. Esri forecasts for 2016 and 2021.



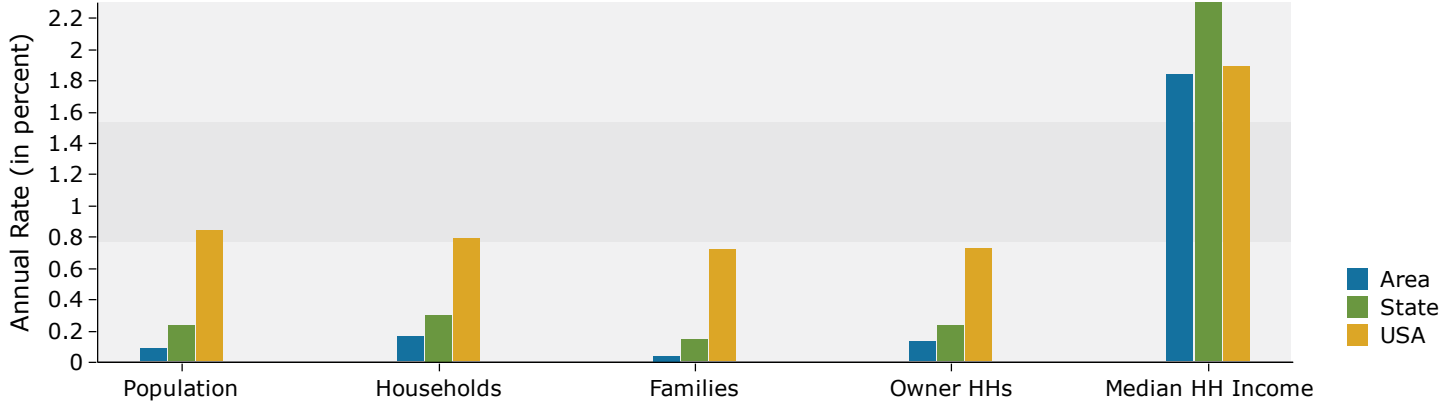
Demographic and Income Comparison Profile

Stone Creek Towne Center
 Location
 Rings: 1, 3, 5 mile radii

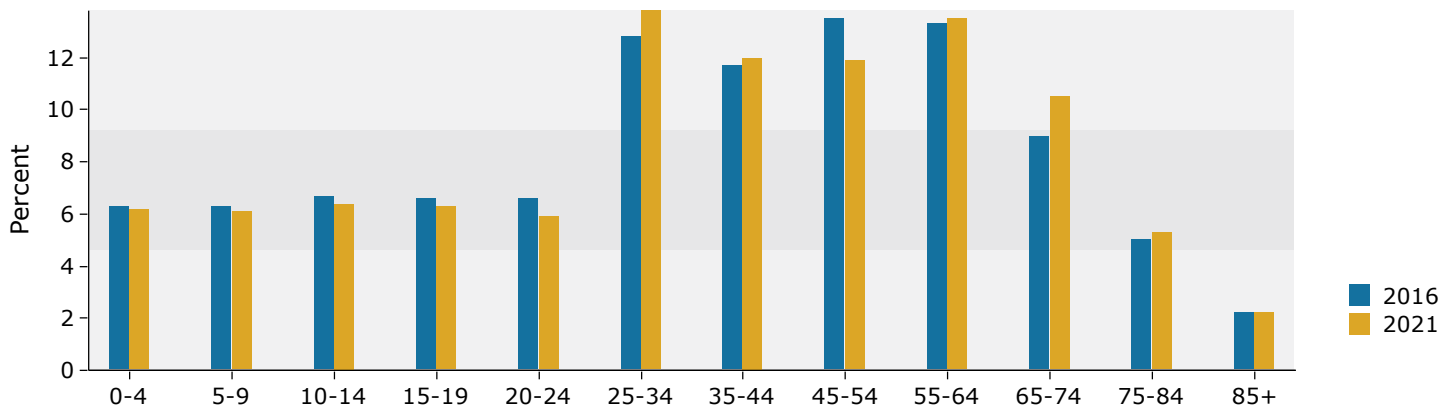
Prepared by Esri
 Latitude: 39.25218
 Longitude: -84.60084

3 miles

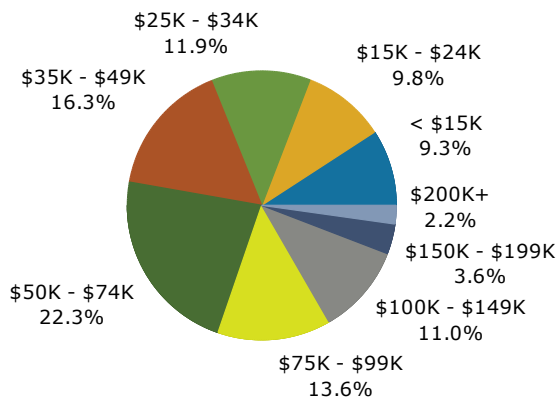
Trends 2016-2021



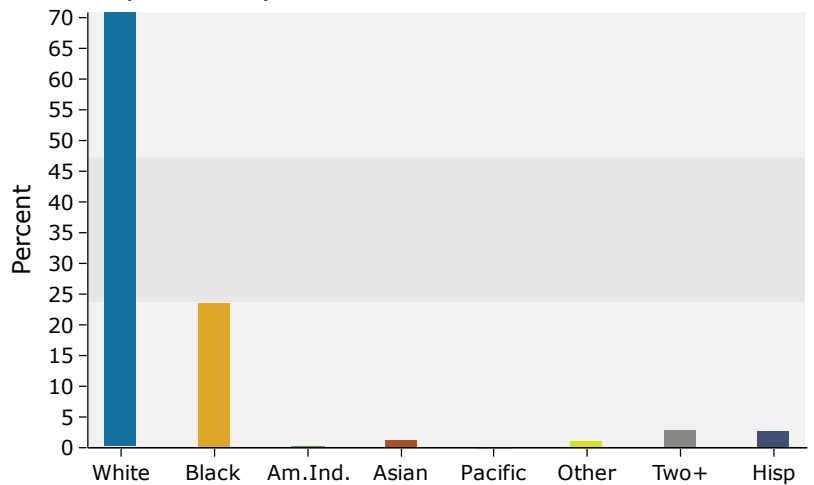
Population by Age



2016 Household Income



2016 Population by Race



Source: U.S. Census Bureau, Census 2010 Summary File 1. Esri forecasts for 2016 and 2021.



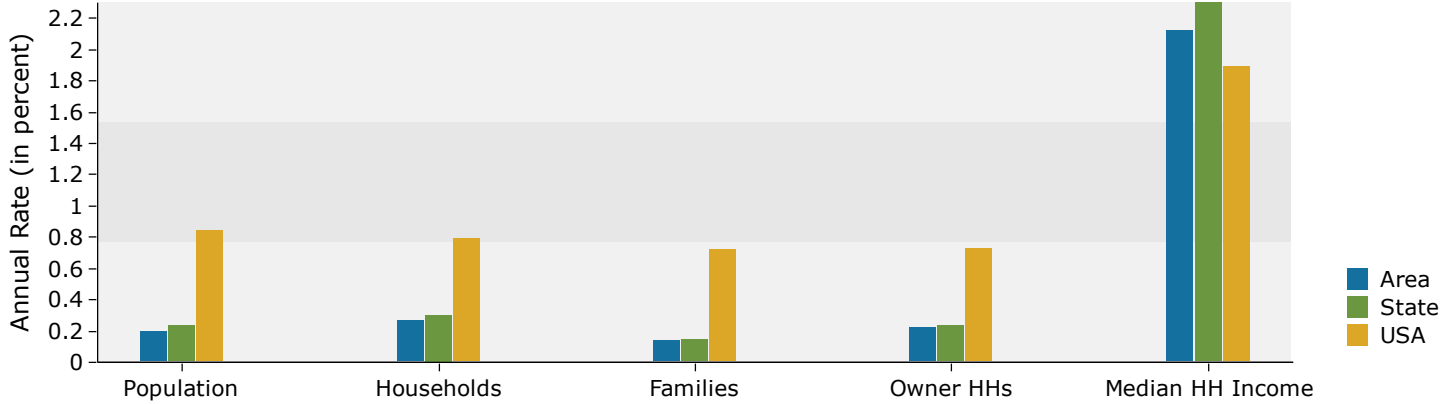
Demographic and Income Comparison Profile

Stone Creek Towne Center
 Location
 Rings: 1, 3, 5 mile radii

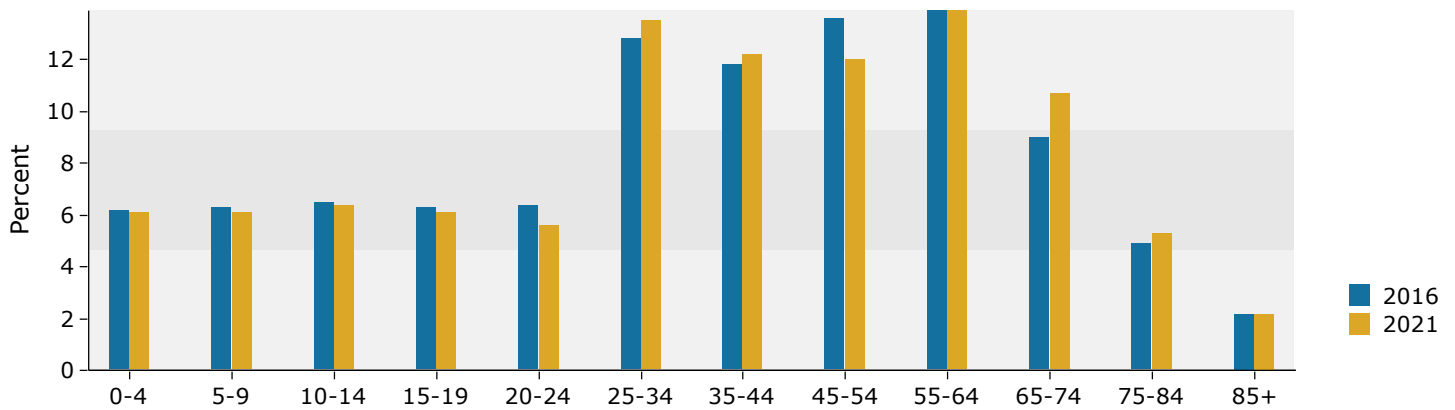
Prepared by Esri
 Latitude: 39.25218
 Longitude: -84.60084

5 miles

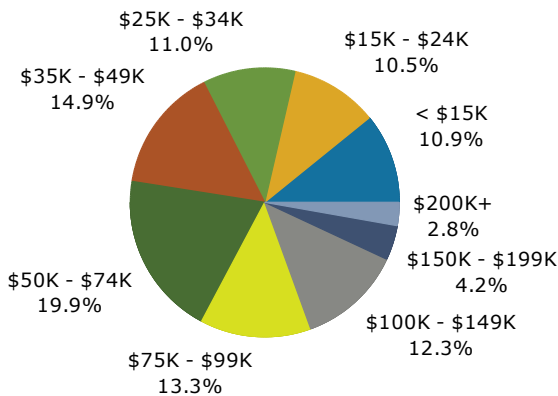
Trends 2016-2021



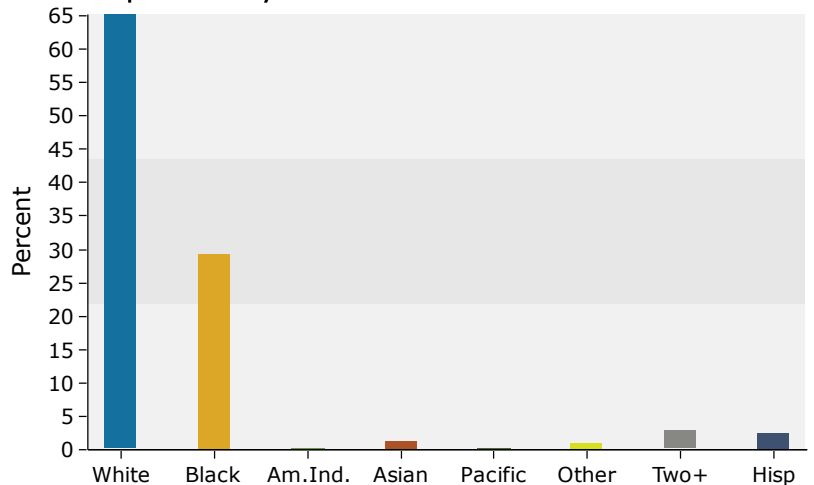
Population by Age



2016 Household Income



2016 Population by Race



Source: U.S. Census Bureau, Census 2010 Summary File 1. Esri forecasts for 2016 and 2021.